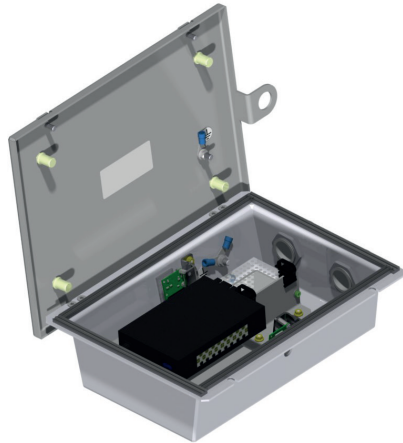


Display technology

## FUNKWERK SENSOR MODULE



### Funkwerk Sensor Module Standalone

The stand-alone version of the Funkwerk sensor module offers the possibility of expanding existing indicators or using the corresponding functions as an independent sensor module. The Funkwerk Sensor Module - Stand Alone, can be used in a variety of ways due to its different mounting options. It can be mounted on walls, ceilings or masts.

---

ORDER NO. / DESIGNATION

362.20000-0001 Funkwerk sensor module standalone

## TECHNICAL DATA

### GENERAL PROPERTIES

Application	Separate module or additional module for display
Functions	<ul style="list-style-type: none"> <li>People counting and recognition</li> <li>Energy cost reduction through display switch-off</li> <li>Light sensor</li> <li>Protection against vandalism</li> </ul>
Temperature range	<ul style="list-style-type: none"> <li>-20 °C to + 40 °C (operation)</li> <li>-20 °C to + 60 °C (storage)</li> </ul>
Air conditioning	Cooling via a heat sink coupled with a clamping plate, to dissipate the heat outside the housing.
Supply voltage	230 V/50 Hz
Protection class	IP 65 according to EN 60529 / IEC 529
Mounting type	4 x M6 mounting bolts
Approval	CE (EMC and electrical safety) according EU Directive 2014/35/EU
Weight	approx 4 kg
Dimensions	approx 199 x 272 x 75 mm
Housing material	Sheet steel

## TECHNICAL DATA

### COMPUTER BOARD

Processor	NVIDIA Jetson Nano, ARM-A57-Prozessor with 4 x 1.43 GHz
Graphics unit	NVIDIA Maxwell™ 128-core with 921 MHz
Memory	4 GB LPDDR4-RAM, 16 GB eMMC
Connections	Gigabit Ethernet/LAN RJ45 USB 3.0 port (1x) USB-C port(1x) 40-pin extension (GPIOs, I <sup>2</sup> C, SPI, UART, I <sup>2</sup> S) MIPI CSI-2 (2x) 4K-capable HDMI
Dimensions	100 mm x 80 mm x 29 mm

### GLASS BREAKAGE SENSOR

Sensor-IC	SPH0645LM4H-B
Signal to noise ratio (SNR)	65 dB (A)
Connections	I <sup>2</sup> S
Dimensions	16.5 mm x 12.7 mm

### SOFTWARE FUNCTIONS

Configuration	Sensor module is configured via the web interface
Data transmission	Sensor data via MQTT